

# Pilot for Power

Effective collaboration hinges on several key factors: a shared purpose, clear roles, willing community partners, and capable leaders. However, even with these elements in place, scaling from initial funding to a significant community-changing initiative remains a substantial challenge.

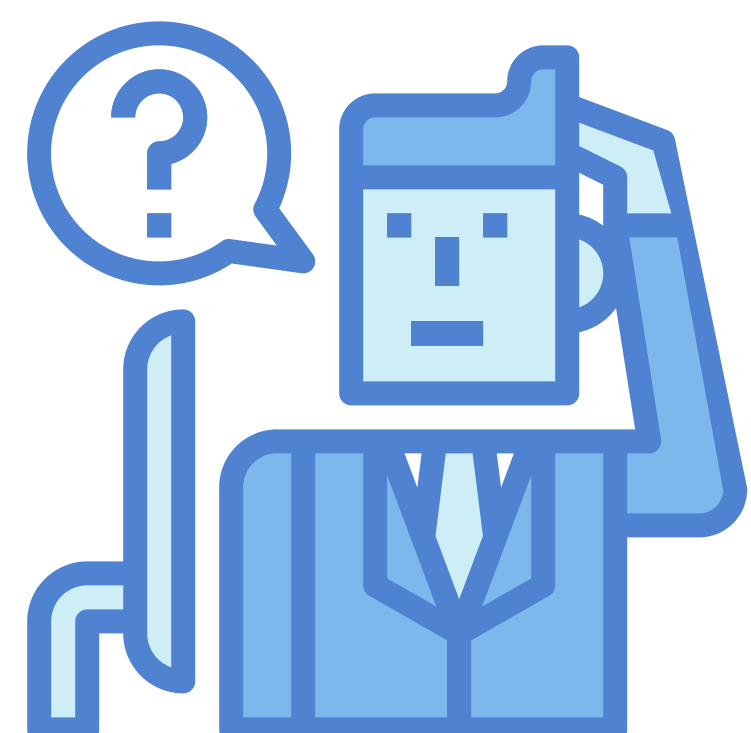


To focus your collaborative's efforts, it can be beneficial to develop a clear pilot project that external stakeholders can easily grasp and that demonstrably benefits key supporters across the community. This pilot can also amplify your collaborative's influence.

A pilot provides a shared framework for making adjustments and attracting further support.

Use this worksheet to map your collaborative's path to a powerful pilot.

## What is a Pilot?



The pilot project is an initial small-scale implementation that is used to prove the viability of a project idea. Pilots often focus on both data collection and improving methodology

## Why is it necessary?

Pilot programs create a shared language around a shared goal and help collaboratives cut through the noise, work toward the goal, and talk about successes with potential supporters.

# Pilot for Power

Collaborative Name/Your Role:

## GOAL:

What is a measurable goal everyone in your collaborative shares?

## METRIC:

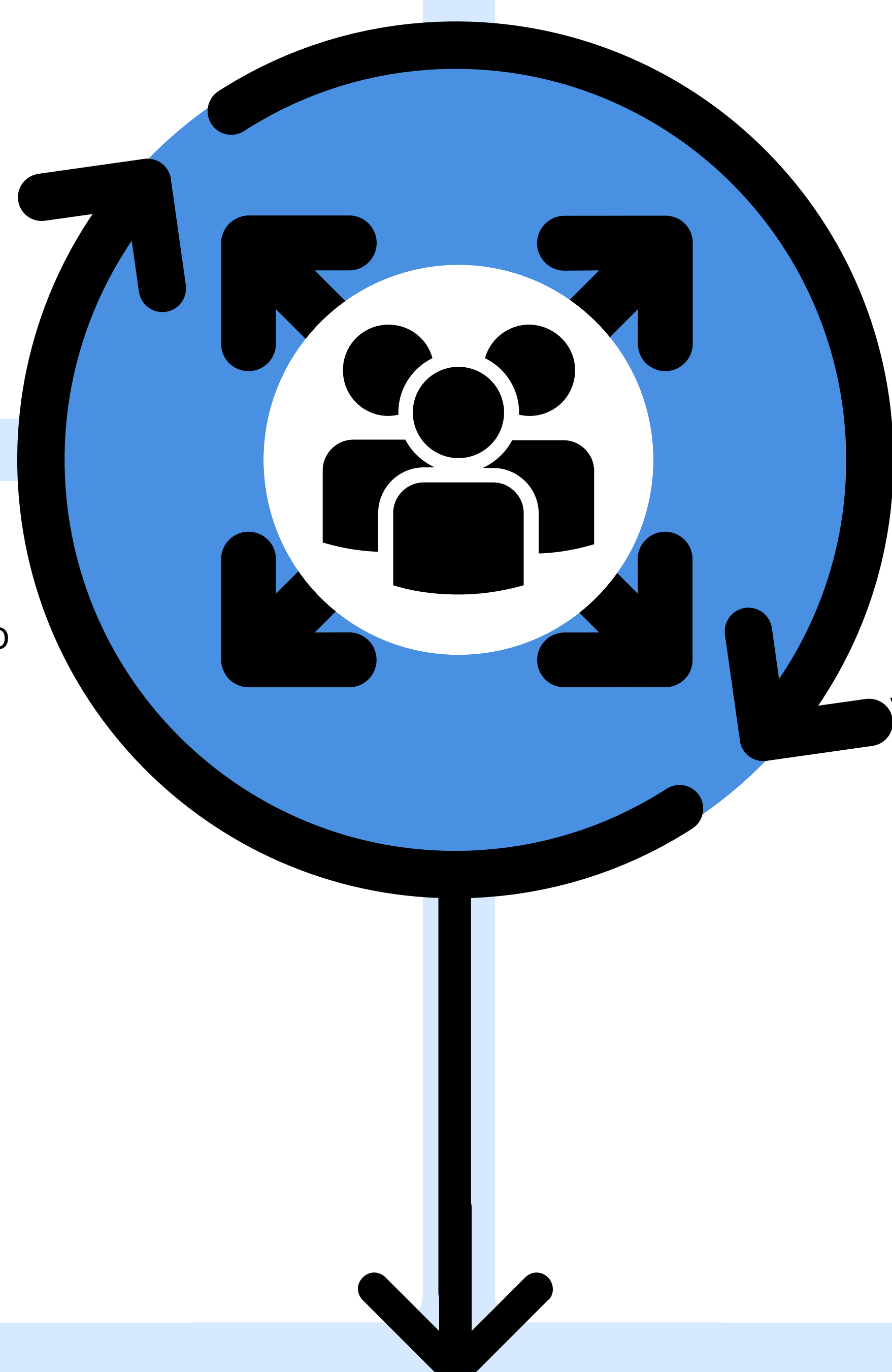
What is the measure you will use to demonstrate progress toward your goal to outsiders?

## PARTNERS:

Who are the right partners to be involved in achieving this goal?

## MESSAGE:

How will you demonstrate your success to those who may support your work?



## WHO IS MY AUDIENCE?

If your pilot is successful, and you demonstrate your success clearly, who are the powerful groups, organizations, or people who may support your work further?

Who can save/make money?

Who's image can benefit?

Who has supported similar legislature?