



Approaches to Building a Policy Assessment to Drive Decision-Making

By Samantha Hamilton

Desired Outcome

By the end of this session, you will have:

- A shared understanding of how Springfield TCI selects its PSE priorities through community feedback and policy assessments.
- Peer learning opportunities to explore strategies for conducting landscape assessments of policy approaches and identifying assessment needs.
- Examples of how coalitions and collaboratives can focus and narrow down their policy priorities.

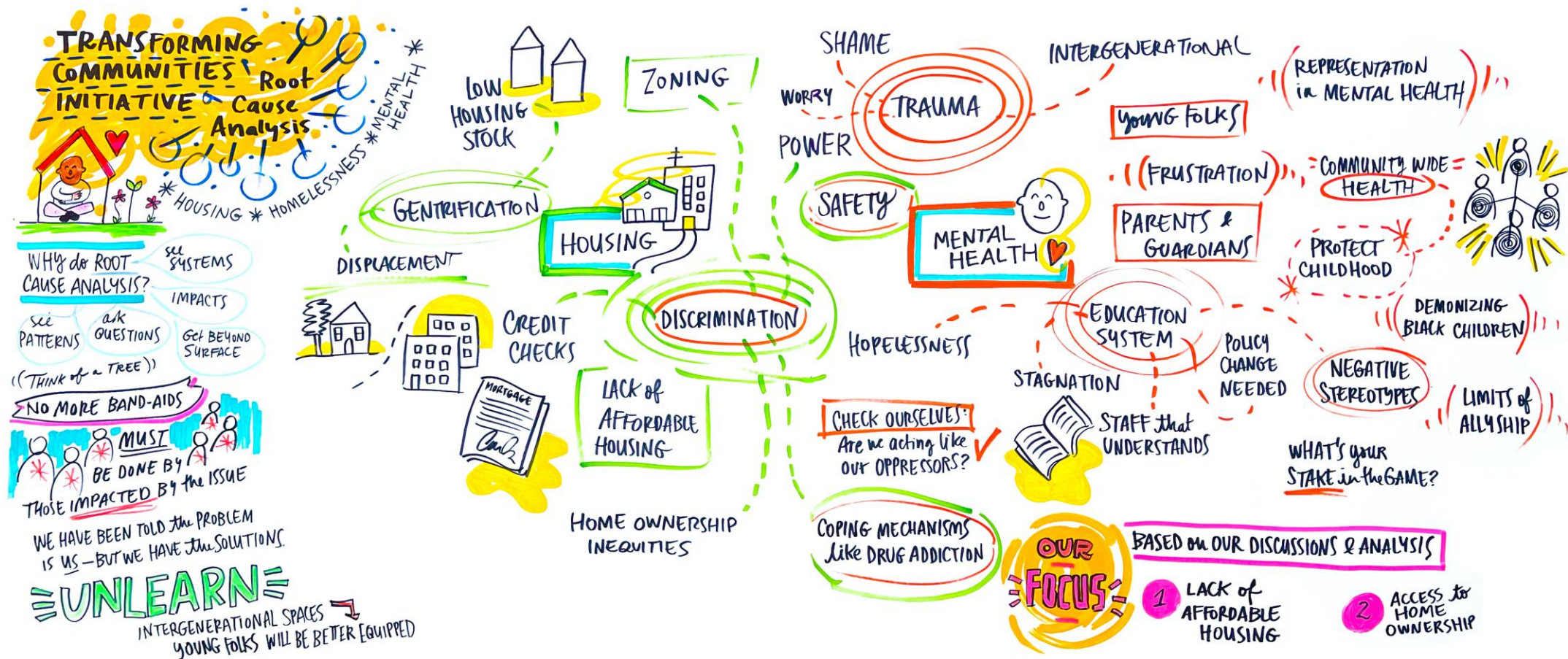
Coalition's Assessment Process





Transforming Community Initiative 2.0 | Housing and Homelessness
Advisory Committee Meeting - March 23rd, 2023





Transforming Community Initiative 2.0 | Root Cause Analysis: Mental Health & Housing
Advisory Committee Meeting - May 25th, 2023

Transforming Community Initiative Efforts

The TCI Coalition has worked with community partners and residents to identify 4 policy and systems change strategies that will address health outcomes, equity, and racial justice in Springfield

- ACCESS TO COUNSEL & HOUSING STABILITY IN MA
- SPRINGFIELD HOUSING TRUST FUND
- SPRINGFIELD GARDENS APTS / SLUMLORD MGMT
- TENANT SUPPORT OFFICE IN SPRINGFIELD



Housing Assessment Report

Springfield Transforming Communities Initiative (TCI)

Homelessness & Housing: Opportunities for Policy, Systems, and Environmental Change

September 2023



Live Well Springfield Coalition is convened by
Public Health Institute of Western Massachusetts



Partnership in Practice
Working to work better.

1. **Content Expert Panel Discussion:** Conducted two panel discussions with experts in mental health and homelessness/housing to provide insights, expertise, and perspectives on the issues.
2. **Root Cause Analysis:** Conducted a root cause analysis session with the Advisory Committee to uncover the causes of housing, homelessness, and mental health challenges in Springfield using the But why?" technique. Session was co
3. **Content Expert Interviews:** Conduct ed interviews with four professionals actively working on homelessness and housing related matters to gain deeper insights and gather firsthand information.
4. **Summary Slide Presentation:** Created a presentation summarizing the findings and insights from the panel discussions and interviews. This
5. **Local Housing and Rental Conditions Research:** Conducted research to assess the current state of housing and rental conditions in Springfield, gathering local data and insights.
6. **Integrated and Expanded Feedback from the Director of Policy /PHIWM:** Review ed by the Director of Data to Policy Action at the Public Health Institute of Western Massachusetts.